

Dimethomorph Monitoring Europe 2016



Country	Locations
Netherlands	4
Belgium	2
Germany	2
France	3
UK	4
Denmark	1
Sweden	2
Spain	2
Portugal	2
Greece	2
Samples	24
Total Isolates	153

ADAMA

Source: Batchgeo

October 3, 2017

2

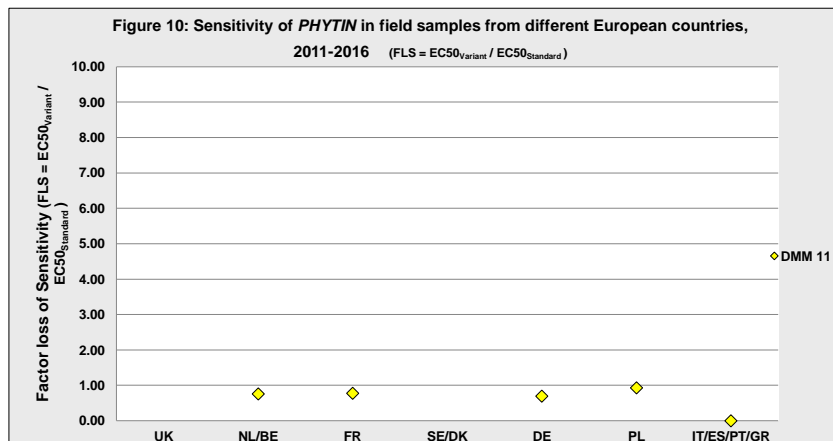
Sensitivity of PHYTIN in field samples from different regions of Europe towards DMM, 2016

EpiLogic sample-ID	Department / county / next town	n	MEC50	EC50min	EC50max
Ireland					
Ph-AD-021	Carlow	NR			
United Kingdom					
Ph-AD-010	Lancashire	10	3,30	2,47	4,90
Ph-AD-012	Derbyshire	10	3,81	1,73	5,48
Ph-AD-022	Nottinghamshire	10	6,94	5,48	9,32
Ph-AD-024	Lincolnshire	NR			
Netherlands					
Ph-AD-017	Borger-Odoorn	6	3,23	2,47	3,83
Ph-AD-018	Lelystad	6	3,40	2,21	5,48
Ph-AD-020	Doesburg	5	4,59	3,39	5,92
Ph-AD-019	Cuijk	6	5,88	5,16	7,78
Belgium					
Ph-AD-008	Hennegau	4	6,10	3,39	8,86
Ph-AD-009	Hennegau	NR			
France					
Ph-AD-011	Sarthe	10	2,59	1,94	3,57
Ph-AD-007	Somme	NR			
Ph-AD-023	Somme	NR			
Sweden					
Ph-AD-015		10	4,70	2,47	6,96
Ph-AD-014		NR			
Denmark					
Ph-AD-013		10	3,94	2,33	5,92
Germany					
Ph-AD-016	Vechta	7	2,75	1,92	3,83
Ph-AD-006	Viersen	8	3,28	2,33	3,83
Portugal					
Ph-AD-003	Braga	4	3,41	2,70	4,78
Ph-AD-025	Leiria	7	3,18	1,94	5,48
Spain					
Ph-AD-004	Pontevedra	10	3,30	2,85	4,78
Ph-AD-005	Pontevedra	10	3,35	1,73	5,07
Greece					
Ph-AD-001	Elis	10	3,71	2,47	4,90
Ph-AD-002	Elis	10	3,93	1,84	5,92

MEC50: Mean EC50 of the sample (geometric mean); EC50min: Lowest EC50 in the sample; EC50max: highest EC50

October 3, 2017 6

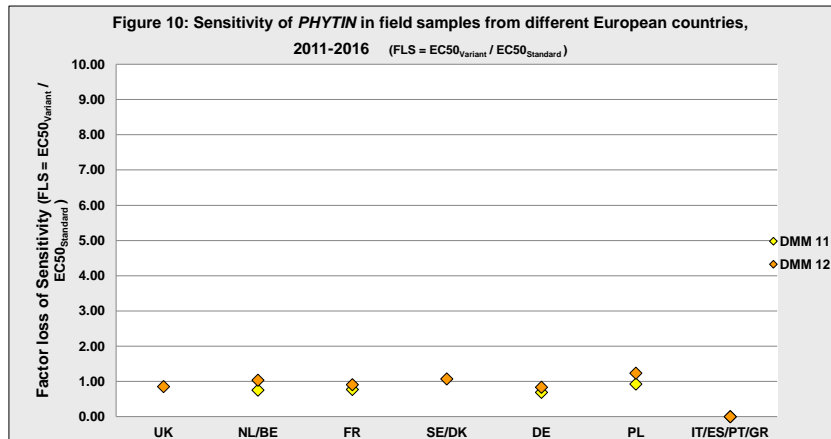
Sensitivity of PHYTIN to Dimethomorph



ADAMA

October 3, 2017 8

Sensitivity of PHYTIN to Dimethomorph

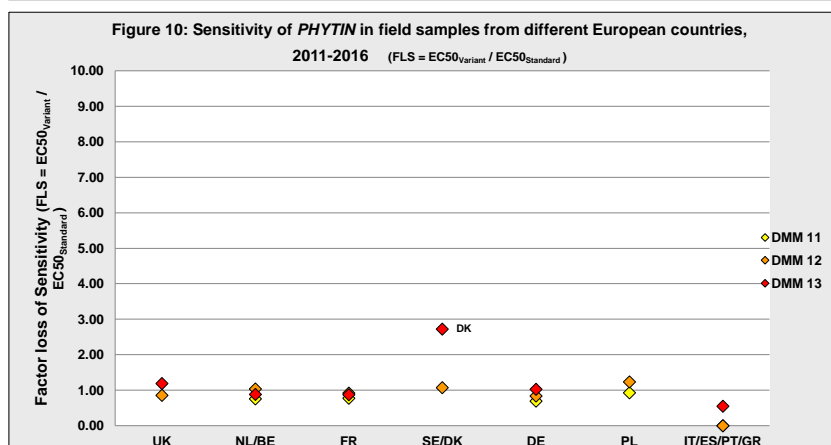


ADAMA

October 3, 2017

9

Sensitivity of PHYTIN to Dimethomorph

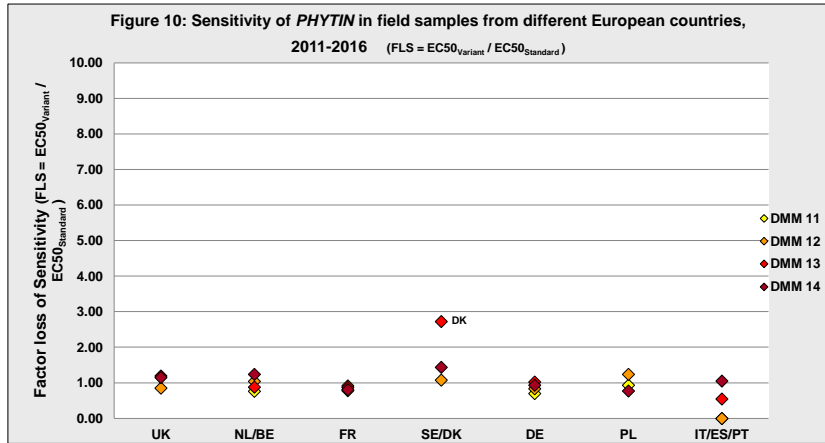


ADAMA

October 3, 2017

10

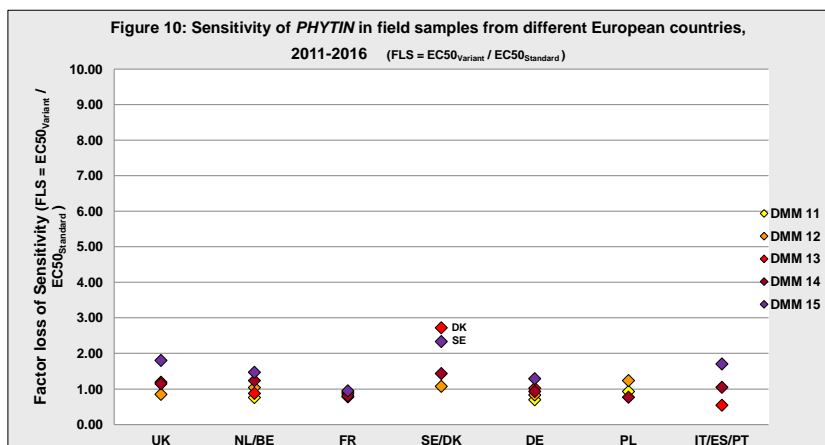
Sensitivity of PHYTIN to Dimethomorph



ADAMA

October 3, 2017 11

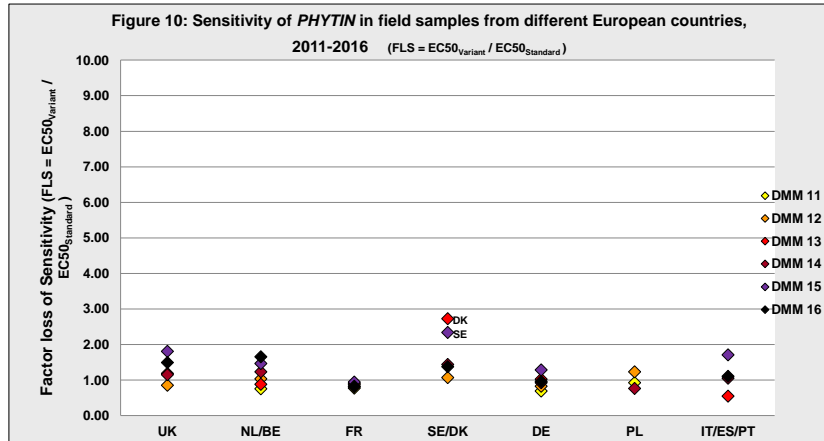
Sensitivity of PHYTIN to Dimethomorph



ADAMA

October 3, 2017 12

Sensitivity of PHYTIN to Dimethomorph



ADAMA

October 3, 2017

13

Dimethomorph Monitoring Europe 2016

PHYTIN – Summary:

- In total 24 samples were sent to EPILOGIC to be analyzed.
- The highest MEC50 value was calculated from an UK sample with 6,94 mg/l a.i., the highest EC50max with 9,32 mg/l a.i. was found in the same isolate in United Kingdom.
- the EC50 of the sensitive standard is 3,35 mg/l a.i.
- Compared to 2015 data no significant change of EC50 values



In all samples *Phytophthora infestans* showed full sensitivity against Dimethomorph

ADAMA

October 3, 2017

15



ADAMA



Thank you
Olaf van Campen

October 3, 2017